

Accu 3 Art. 2500
Accu 4 Art. 2505
Accu 6 Art. 2510

D Gebrauchsanweisung

Accu-Rasenkantenscheren Accu 3 / Accu 4 / Accu 6

GB Operating Instructions

Edging Accu Shears 3 / 4 / 6

F Mode d'emploi

Cisailles à gazon sur accu 3 / 4 / 6

NL Gebruiksaanwijzing

Accu-graskantenscharen 3 / 4 / 6

S Bruksanvisning

Accu Gräskantsaxar Accu 3 / Accu 4 / Accu 6

I Istruzioni per l'uso

Forbici a batteria Accu 3 / 4 / 6

E Manual de instrucciones

Tijeras Accu 3 / 4 / 6

P Instruções de utilização

Tesoura com Acumulador 3 / 4 / 6

DK Brugsanvisning

Accu-sakse Accu 3 / Accu 4 / Accu 6

GARDENA Edging Accu Shears 4 / 5 / 6

Welcome to the Garden of GARDENA



Please read these operating instructions carefully and observe the information they contain. Use these operating instructions to familiarise yourself with the GARDENA Edging Accu Shears, their proper use and the notes on safety.



For safety reasons, children under the age of 16 as well as people, who are not familiar with the operating instructions, should not use these Edging Accu Shears.

→ Please keep these instructions in a safe place.

Contents

1. Where to use Your GARDENA Edging Accu Shears	11
2. For Your Safety	11
3. Assembly	13
4. Initial Operation	13
5. Operating Your Edging Accu Shears	13
6. Maintenance	14
7. Trouble-shooting	15
8. Storing your Edging Accu Shears	16
9. Accessories	16
10. Technical Data	16
11. Service	17

1. Where to use Your GARDENA Edging Accu Shears

Intended Use

The GARDENA Edging Accu Shears 3, 4 and 6 have been designed for cutting the edges of lawns and small areas of grass in private gardens / hobby areas.

Please note



The GARDENA Edging Accu Shears 3, 4 and 6 must not be used in public gardens, parks, sports grounds, along side roads or for agriculture and forestry.

2. For Your Safety



→ Please read the notes on safety for your Edging Accu Shears.

→ **Keep bystanders away.**



Warning, Danger !
Cutting tools have an after-run.

**Warning!**

- Please read the operating instructions before using this tool for the first time.
- Do not use in rain or wet conditions.

Initial Operation

- Inspect these Edging Accu Shears before every use.
- Never disable the safety devices.

Do not use these Edging Accu Shears if the safety devices and/or the blades have been damaged or are worn out.

Proper Use

- Only use the Edging Accu Shears for the purposes specified in these instructions.



Warning!
Personal Injury and Damage to Property

- **The Edging Accu Shears are not intended for cutting hedges or chopping in the sense of composting.**

Work Clothes

- Do not wear loosely hanging clothes or jewellery etc. *They could become caught in the machine.*
- Wear gloves, sturdy shoes and long trousers to protect your legs.

Working Area

- You are responsible for the safety of the working area.
- Make sure that there are no other people (especially children) or animals anywhere near the working area.

Area to be Cut

- Inspect the area to be cut before beginning. Remove any objects from the area.
- Look for objects while you are working.
- If you should come across any obstacles when cutting, turn off the shears by releasing the switch on button ⑤.

Operating Your Edging Accu Shears

- If the cutting blades become blocked, turn off the shears (release the switch on button ⑤) and remove the object (thick branch or another object) using a blunt device.

Never use your fingers to remove objects as the blades can cause serious cuts and injuries.

Charging

The charging cable should be checked regularly for signs of damage or ageing (brittleness) and may only be used if it is in perfect condition.

Only use the original GARDENA charging device or one authorised by GARDENA.

Non-rechargeable batteries must not be charged with this battery charger (danger of fire).

The Edging Accu Shears must not be operated while the battery is charging.

Working Conditions

- Only work when visibility is good.
- Be particularly careful when walking backwards. You might stumble!
- When working ensure you adopt a sturdy stance.

Interrupting Your Work

- Never leave the Edging Accu Shears unattended at the working area. If you should interrupt your work, store the Shears in a safe place.
 - If you interrupt your work to move to another working area, you must switch off the Edging Accu Shears until you reach the new working area (release the switch on button ⑤).
- Never use your Shears when it is raining or in a damp, wet area.

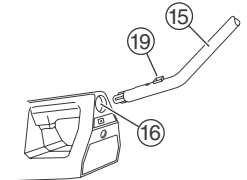
3. Assembly

GARDENA Edging Accu Shears 3, 4 and 6 are supplied fully assembled. The GARDENA Telescopic Swivel Handle (Art. No. 2525), which is available as an accessory, must be attached to the shears.

Attaching the Telescopic Swivel Handle:

- Push the extension handle ⑮ into the mounting point ⑯ at the desired angle.
The catch clicks into place.

Your Edging Accu Shears with Telescopic Swivel handle are now ready for use.

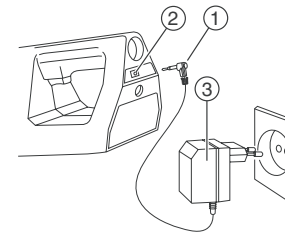


Removing the Telescopic Swivel Handle:

- Press the release button ⑰ and pull out the handle.

4. Initial Operation

Charging the Accu:



Before using your Edging Accu Shears for the first time and with empty accus, the accus must be charged for approx. 20 hours. The usual charging time is about 14 hours. The accus discharge themselves when stored for a longer period of time. Therefore, the Shears should be recharged in a dry place before each operation.



Over-voltage damages accus.
 → Ensure the mains voltage is correct.

1. Insert charging cable ① into charging socket ② of the Edging Accu Shears.
2. Plug charging unit ③ into a wall socket.
3. Unplug Accu Shears from socket after 14 hours (normal) or 20 hours.

5. Operating Your Edging Accu Shears

For best cutting results, use your Edging Accu Shears when the lawn is dry. There is no electrical danger, however, if the grass is damp. The large contact surface makes the shears easy to handle.



Warning!
Risk of Injury

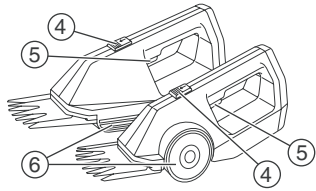
When the cutting power drops, recharge your shears immediately to prevent the cells from becoming completely empty.

There is a risk of injury if the switching devices installed on the Shears are removed or bridged (e.g. by fastening the on switch to the handle). This prevents the Edging Accu Shears switching off automatically.

→ **Never remove or bridge the switching devices.**

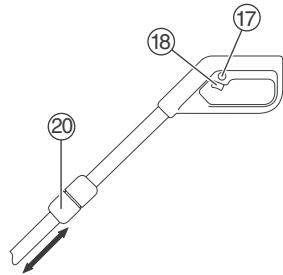
The starting lockout prevents your GARDENA Edging Accu Shears from being switched on unintentionally.

Cutting Grass:



1. Clear the area to be cut of stones and other solid objects.
2. Push the starting lockout ④ forwards.
3. Press the starting switch ⑤.
4. Slide the Edging Accu Shears along the lawn on their sliding sled or wheels ⑥. *This ensures a constant even cutting height.*

Cutting Grass with the Telescopic Swivel Handle:



The length of the GARDENA Telescopic Swivel Handle (Art. No. 2525) can be infinitely varied and therefore adjusted to your individual height. The swivel handle or the Edging Accu Shears can be swivelled up to 45°.

1. Clear the area to be cut of stones and other solid objects.
2. Attach the Telescopic Swivel Handle (see "3. Assembly").
3. Loosen the adjusting bolt ⑳.
4. Set the handle to the correct length and tighten the adjusting bolt ⑳.
5. Press and hold down the starting lockout ⑰ and press the starting switch ⑱. *The blades begin to cut.*
6. Release the starting lockout ⑰.
7. Slide the Edging Accu Shears along the grass on their sliding sled or wheels ⑥. *This ensures a constant even cutting height.*

6. Maintenance



Warning!
Risk of Injury

Blades can cause injury.

→ **Disconnect your Edging Accu Shears from the mains before carrying out maintenance work.**



Warning!
Personal Injury and Damage to Property

There is a risk of personal injury and damage to the Shears if you clean them under running water (especially under high pressure).

→ **Never clean your Shears under running water.**

Cleaning Your Edging Accu Shears and Oiling the Blades:

To increase the cutting performance and lengthen their working life, the Shears should be cleaned and oiled before and after use.

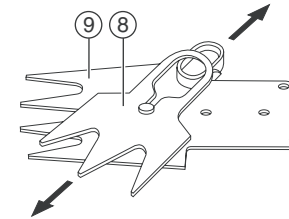
Never grease the blades.

1. Clean your Edging Accu Shears with a damp cloth.
2. Oil the blades (e.g. with sewing machine oil).

The blades of your GARDENA Edging Accu Shears are non-stick coated. To obtain good cutting results, the blades should be cleaned thoroughly from time to time and should always be sharp.

Always remove notches and burrs caused by stones etc. immediately.

Cleaning the Blades thoroughly and Sharpening the Blades:



1. Remove the blades (see "7. Trouble-shooting", "Replacing Grass Cutting Blades").
2. Separate the upper blade ⑧ and lower blade ⑨.
3. Remove any grass and dirt between the upper and lower blades.
4. Sharpen the blades using a sharpening stone.
5. Fit the blades (see "7. Trouble-shooting", "Replacing Grass Cutting Blades").

7. Trouble-shooting



Warning!
Risk of Injury

Blades can cause serious injury.

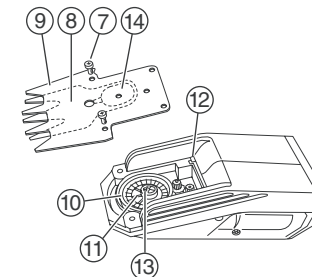
→ **Disconnect the Edging Accu Shears from the mains before trouble-shooting.**

Fault	Possible cause	Remedy
Edging Accu Shears do not cut well	Blades are faulty.	→ Check blades and replace if necessary.

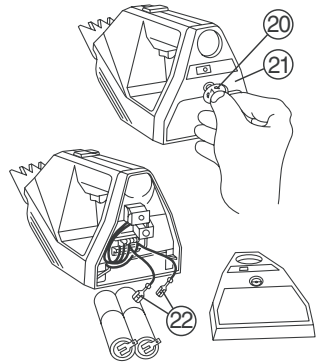
Replacing Grass Cutting Blades:

Please only use original GARDENA Edging Accu Shears Trimmer Blades:

- Art. No. 2345 for Accu 3 / Accu 4
- Art. No. 2346 for Accu 6



1. Loosen screws ⑦ and remove grass cutting blades.
2. Clean the area around the gears and lubricate the gear wheels with non-corrosive grease (Vaseline).
3. Turn the cam gear ⑩ so that the marking line ⑪ is pointing exactly forwards.
4. Ensure the upper blade ⑧ is positioned exactly in the middle of the lower blade ⑨.
5. Guide the blade underneath the blade pegs ⑫ of the carriage. *Make sure the cam ⑬ snaps into the connecting link ⑭.*
6. Tighten the screws ⑦.

Changing the Accus:

⚠ Risk of short circuit, Risk of fire.
→ The contacts of the accu must not touch metallic parts.

1. Loosen screw 20.
2. Remove cover 21.
3. Remove accu.
4. Pull cable receptacles 22 off accu pack.
5. Install new accu in reverse order.

With all other malfunctions, please contact one of the GARDENA service centres (see "11. Service") or a dealer authorised by GARDENA.

Repairs must only be performed by specialists authorised by GARDENA.

8. Storing Your Edging Accu Shears

Correct Wintering:

Store your Edging Accu Shears out of the reach of children.

1. Fully charge Edging Accu Shears after last use (20 hours).
2. Cover the blades with sheath for storage.
3. Store Edging Accu Shears in a cool, dry place where they are protected from frost.

Recharge the accus for approx. 20 hours before using your Shears again in the Spring.

Disposal/Recycling:

Your GARDENA Edging Accu Shears contain nickel-cadmium cells. After their lifetime has expired, these cells may not be disposed of as normal household rubbish.



Ni-Cd

Please return the Ni Cd cells to your GARDENA dealer or dispose of them properly at a public recycling centre.

1. Discharge the Ni Cd cells completely.
2. Dispose of the Ni Cd cells properly.

9. Accessories

Telescopic Swivel Handle

Cut lawn edges without kneeling or bending.

- Art. No. 2525

10. Technical Data

	Accu 3	Accu 4	Accu 6
Accu	3 NC à 1.2 V = 3.6 V (1.7 Ah)	4 NC à 1.2 V = 4.8 V (1.7 Ah)	6 NC à 1.2 V = 7.2 V (1.7 Ah)
Mains connection for charging device	230 V / 50 Hz	230 V / 50 Hz	230 V / 50 Hz

	Accu 3	Accu 4	Accu 6
Charging time (with empty accu)	20 hours	20 hours	20 hours
Usual charging time	14 hours	14 hours	14 hours
Running time (with fully charged accu)	approx. 60 min. approx. 75 min. approx. 90 min.		
Cutting performance	Depending on grass to be cut		
Lawn blade	approx. 1100 m	approx. 1400 m	approx. 1500 m
Working area related emission characteristic value $L_{pA}^{1)}$	8 cm cutting width non-stick coated	8 cm cutting width non-stick coated	10 cm cutting width non-stick coated
Hand-Arm vibrations $a_{vhw}^{1)}$	74 dB (A)	74 dB (A)	82 dB (A)
	< 2.5 ms ⁻²	< 2.5 ms ⁻²	< 2.5 ms ⁻²

1) Measuring method according to prEN 50260-1

11. Service

Warranty

GARDENA guarantees this product for 2 years (from date of purchase). This guarantee covers all serious defects of the unit that can be proved to be material or manufacturing faults. Under warranty we will either replace the unit or repair it free of charge if the following conditions apply:

- The unit must have been handled properly and in keeping with the requirements of the operating instructions.
- Neither the purchaser nor a non-authorised third party have attempted to repair the unit.

The Trimmer Blades are wearing parts and are not covered by the guarantee.

This manufacturer's guarantee does not affect the user's existing warranty claims against the dealer/seller.

If a fault occurs with your Edging Accu Shears, please return the faulty unit together with the receipt and a description of the fault, with postage paid to the address of the Service Centre on the back of these operating instructions.

Product Liability

We expressly point out that, in accordance with the product liability law, we are not liable for any damage caused by our units if it is due to improper repair or if parts exchanged are not original GARDENA parts or parts approved by us, and, if the repairs were not carried out by a GARDENA Service Centre or an authorised specialist. The same applies to spare parts and accessories.



EU Certificate of Conformity

The undersigned GARDENA Kress + Kastner GmbH · Hans-Lorensen-Str. 40 · D-89079 Ulm hereby certifies that, when leaving our factory, the units indicated below are in accordance with the harmonised EU guidelines, EU standards of safety and product specific standards. This certificate becomes void if the units are modified without our approval.

Description of the units: Edging Accu Shears
Types: Accu 3 / Accu 4 / Accu 6
Art. No.: 2500 / 2505 / 2510
EU directives: Machinery Directive 98/37/EC
Electromagnetic Compatibility 89/336/EC
Directive 93/68/EC

Harmonised European standards: EN 292-1
EN 292-2
EN 60335-1 : 09/94

Year of CE marking: 1993

Ulm, 19.03.1999

Description of the unit: Charging Unit
Type: NL 12
Art. No.: 2105
EU directives: Electromagnetic Compatibility 89/336/EC
Low Voltage Directive 73/23/EC
Directive 93/68/EC

Thomas Heintl
Technical Dept. Manager

Harmonised European standards: EN 60335-1
Year of CE marking: 1993

Deutschland

GARDENA Kress + Kastner GmbH
GARDENA Service
Hans-Lorenser-Straße 40
D-89079 Ulm
Produktfragen: (07 31) 490-123
Reparaturen: (07 31) 490-290

Argentina

Argensem S.A.
Venezuela 1075
(1618) El Talar - Buenos Aires

Australia

NYLEX Consumer Division
76-88 Mills Road
P.O. Box 722
Braeside 3195
Melbourne, Victoria

Austria

GARDENA Österreich Ges. m.b.H.
Stettnerweg 11-15
2100 Korneuburg

Belgium

MARKT (Belgium) NV/SA
Sterrebeekstraat 163
1930 Zaventem

Brazil

M. Cassab
Av. das Nações Unidas, 20.882
Santo Amaro, CEP 04795-000
São Paulo - S.P.

Bulgaria / България

ДЕНЕКС ООД
Бул. "Г.М.Димитров" 16 ет.4
София 1797

Canada

GARDENA Canada Ltd.
100, Summerlea Road
Brampton, Ontario
Canada L6T 4X3

Chile

Antonio Martinic Y CIA. LTDA.
Gilberto Fuenzalida 185 Loc.
Las Condes - Santiago de Chile

Costa Rica

Compania Exim
Euroiberoamericana S.A.
350 Sur del Automercado
Los Yoses
San Pedro

Cyprus

FARMOKIPIKI LTD
P.O. Box 7098
74, Digeni Akrita Ave.
1641 Nicosia

Czech Republic

GARDENA spol. s.r.o.
Řípská 20a, č.p. 1153
62700 Brno

Denmark

GARDENA Danmark A/S
Naverland 8
2600 Glostrup

Finland

Habitec Oy
Martinkyläntie 52
01720 Vantaa

France

GARDENA France
Service Après-Vente
BP 50080
95948 ROISSY CDG Cedex

Great Britain

GARDENA UK Ltd.
27-28 Brenkley Way
Blezard Business Park
Seaton Burn
Newcastle upon Tyne
NE13 6DS

Greece

Agrokip G. Psomadopoulos & Co.
20, Lykourgou str.
Kallithea - Athens

Hungary

GARDENA Magyarország Kft.
Késmárk utca 22
1158 Budapest

Iceland

Heimilistaeki hf
Saetun 8
P.O. Box 5340
125 Reykjavik

Republic of Ireland

Michael McLoughlin & Sons
Hardware Limited
Long Mile Road
Dublin 12

Italy

GARDENA Italia S.r.l.
Via Donizetti 22
20020 Lainate (Mi)

Japan

KAKUDAI Mfg. Co. Ltd.
1-4-4, Itachibori Nishi-ku
Osaka 550

Luxembourg

Magasins Jules Neuberg
Grand Rue 30
Case Postale No. 12
Luxembourg 2010

Netherlands

GARDENA Nederland B.V.
Postbus 50176
1305 AD ALMERE

Neth. Antilles

Jonka Enterprises N.V.
Sta. Rosa Weg 196
P.O. Box 8200
Curaçao

New Zealand

NYLEX New Zealand Limited
Private Bag 94001
South Auckland Mail Centre
10 Offenhauser Drive
East Tamaki, Manukau

Norway

GARDENA Norge A/S
Postboks 214
2013 Skjetten

Poland

GARDENA Polska Sp. z o.o.
Szymanów 9 d
05-532 Baniocza

Portugal

MARKT (Portugal), Lda.
Recta da Granja do Marquês
Edif. GARDENA
Algueirão
2725-596 Mem Martins

Russia / Россия

АО АМИДА ТТЦ
ул. Мосфильмовская 66
117330 Москва

Singapore

Variware
Holland Road Shopping Centre
227-A 1st Fl., Unit 29
Holland Avenue
Singapore 1027

Slovenia / Croatia

Silk d.o.o. Trgovina
Brodišče 15
1236 Trzin

South Africa

GARDENA South Africa (Pty.) Ltd.
P.O. Box 11534
Vorna Valley 1686

Spain

ANMI Andreu y Miriam S.A.
Calle Pere IV, 111
08018 Barcelona

Sweden

GARDENA Svenska AB
Box 9003
20039 Malmö

Switzerland

GARDENA Kress + Kastner AG
Bitziberg 1
8184 Vachenbülach

Ukraine / Украина

АОЗТ АЛЬЦЕСТ
ул. Гайдара 50
г. Киев 01033

Turkey

Dost Diş Ticaret Mümessilik A.Ş.
Yeşilbağlar Mah. Başkent
Cad. No. 26
Pendik - İstanbul

USA

GARDENA
3085 Shawnee Drive
Winchester, VA 22604

2500-20.960.11/0021
GARDENA Kress + Kastner GmbH
Postfach 27 47, D-89070 Ulm
<http://www.gardena.de>