



OPERATING MANUAL BHG-1800

VERSION 2.0



EC DECLARATION OF CONFORMITY

BLASTRAC B.V.
Utrechthaven 12
NL - 3433 PN NIEUWEGEIN
Tel: 0031 (0)30 601 88 66
Fax: 0031 (0)30 601 83 33
Info@Blastrac.nl
The Netherlands

On sole responsibility we declare that this product is in conformity with the following standards and standard documents:

EN 50 144, EN 55014, EN 61 000, IEC 60 745
According to the regulations 2006/95/EC, 89/336/EC, 98/37/EC

Model: BLASTRAC BHG-1800

Nieuwegein 02-07-2012


Michiel Kalisvaart

CE



Floor and surface grinder

BHG-1800

Important instructions

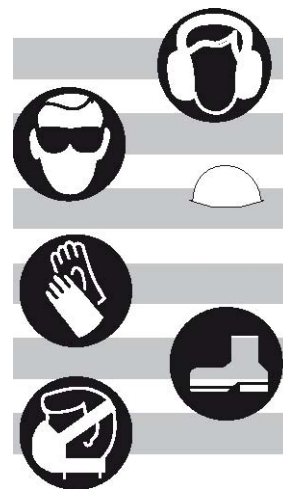
Important instructions and warning notices are allegorized on the machine by means of symbols:

- Warning of general danger
- Warning of dangerous voltage
- Warning of hot surface
- Danger of being crushed
- Danger of being ripped or cut.



During work you should wear protection glasses, ear protectors, protective gloves and sturdy work clothes!

- Use ear protection
- Wear protection glasses
- Wear a helmet
- Use protective gloves
- Wear protective boots
- Wear a dust mask





Technical Specifications

Floor and surface grinder BHG-1800

Interference suppression according to: EN 55014 and EN 61000

Electrical overload protection with LED Thermal overload protection

Nominal voltage:	230 V
Power drain:	1800 W
Rated current:	8 A
Frequency:	50-60 Hz
Load speed:	10.000 rpm
Max. grinding Ø:	125 mm
Spindle:	M 14
Protection class	II
Cable length:	5 m
Dust extractor connection:	35 mm
Weight:	5.5 kg
Dimensions:	310 x 230 x 275 mm

Content of delivery

Floor and surface grinder with cup wheel, instruction manual and safety manual in blow molded case.

Application for intended purpose

The floor and surface grinder is indented for professional use.

With an appropriate grinding wheel, the tool may be used for smoothing rough concrete, removing mould seams, residual mud, joint fillers and tile adhesives.

Only use grinding wheels recommended by the manufacturer. These have a small weight and a high concentricity. Using other grinding wheels can cause an overload of the machine or damage of the bearings and put the user in danger.



Safety instructions

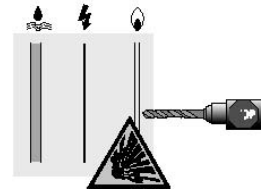
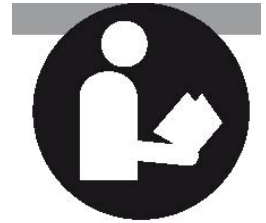
Safe work with the machine is only possible if you read this operating instruction and the safety instructions completely and follow the instructions contained strictly.

Additionally, the general safety instructions of the booklet supplied with the tool must be observed. Prior to the first use, the user should absolve a practical training.

If the mains cable gets damaged or cut during the use, do not touch it, but instantly pull the plug out of the socket. Never use the tool with damaged mains cable.

The tool must neither be wet nor used in humid environment.

- Do not use the tool in an environment with danger of explosion
- Do not drill into asbestos-containing materials
- Modifications of the tool are prohibited
- Never use the machine without dust guard. Use machine with partly removed dust guard in corners only For other applications the dust guard must always be closed
- Always check the tool, cable and plug before use. Have damages only repaired by specialists. Insert the plug into the socket only when the tool switch is off.
- When you work outside, the machine has to be used with a fault-current circuit breaker with max. 30mA
- The machine should only work under supervision of somebody. Plug and switch the machine off if it is not under supervision, in case of putting up and stripping down the machine, in case of voltage drop or when fixing or mounting an accessory
- Switch the machine off if it stops for whatever reason. You avoid that it starts suddenly and not under supervision
- Don't use the machine if a part of the housing is damaged or in case of damages on the switch, the cable or plug
- Pay attention that the speed indicated on the grinding wheel meets or is higher than the maximum speed indicated on the machine
- Grinding wheels have to be stored and used carefully according to the instructions of the producer
- Check the accessories before use. Do not use any products which are broken, cracked or damaged in another way
- Before use, make sure that the tool is correctly fixed and fastened
- Let it run idle for about 30 seconds in a safe position. If considerable vibrations occur or if other defects are recognized, switch off immediately
- Always lead the mains and extension cable as well as the extraction hose to the back away from the machine





- Power tools have to be inspected by a specialist in regular intervals
- Never carry the machine at its cable
- Do not touch rotating parts
- Persons under 6 years of age are not allowed to use the tool
- During use, the operator and other persons standing nearby have to wear suitable ear protectors, a dust mask and protection glasses
- Make sure that persons in the work space are not endangered by particles flying around

- Keep the handles dry, clean and free of oil and grease

- During operation, always hold the tool with both hands

- Attention! The tool still runs for a little while after the machine was switched off.

For further safety instructions, please refer to the enclosure.

Electrical Connection

First check the correspondence between voltage and frequency compared with the data mentioned on the identification plate.

Voltage differences from + 6% tot -_0 % are allowed. The grinder is made in protection class II.

Only use extension cables with a sufficient cross-section. A cross-section which is too small could cause considerable drop in performance and an overheating of machine and cable. The tool includes a start-up speed limiter to prevent fast expulsion fuses from unintended responding.



Switching ON and OFF

Short time operation:
ON: OFF: Press the ON/OFF switch Release the ON/Off switch

Permanent operation:
ON: OFF: Keeping the ON/Off switch pressed, push in the arrestor button Press and release the ON/OFF switch again

Attention! In case of every stop of the machine or a power cut, the lock button has to be released immediately by pressing the ON/OFF switch. So you can avoid an unintentional restart of the machine (physical hazard).

Overload protection

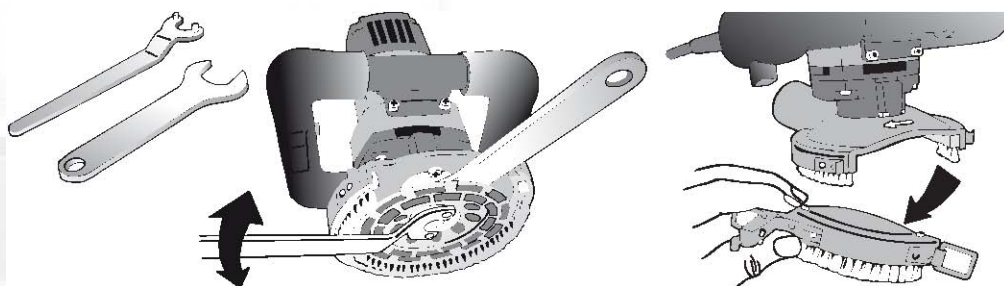
To protect the user and the machine, the BHG-1800 is equipped with an electronic overload protection: To warn the user against an overload of the machine due to too high grinding pressure, a LED is attached to the motor housing. It does not light during idle run or at normal load. When the unit is overloaded the LED lights red. In this case, the unit must be stress-relieved. You can continue working after having stress-relieved and switching OFF and ON the power tool again.

Changing the cup wheel

Attention!

The cup wheel might heat up enormously during operation. You could burn your hands or get cut or ripped by the segments. Therefore, always use protective gloves when changing the cup wheel. Before any work on the tool is done, disconnect the plug from the mains!

First of all, the detachable hood segment has to be removed. The snap fit opens up and the segment is pushed forward. Now you can hold up the driving disc between gearbox and cup wheel by using a jaw wrench. Use the face spanner to unscrew the driving nut. Then remove the mounted cup wheel respectively mount the new one. The assembly works the other way round! Let the machine run for a short period of time in a safe position. If the machine does not run easily, stop working immediately. Use only original accessories!





Application of cup wheels

Ø125 diamond cup wheel	BG707105	Designed for soft floors / materials
	BG707104	Designed for medium floors / materials
Ø125 black grinding cup wheel (single row)	BG707119	Designed for extremely hard floors
Ø125 black grinding cup wheel (double row)	BG707120	Designed for extremely hard floors
Ø125 PCD cup wheel	BG707195	Designed to remove elastic materials

Dust extraction

Dust which occurs during your work is hazardous to health. That is why the BHG-1800 must be used with a vacuum cleaner, and a dust mask has to be worn. The suitable Wet/Dry vacuum cleaner BDC-1112 is available as accessory. It can directly be attached to the connection on the dust hood:

Changing the brush rim: If the length of the brushes is – due to wear – smaller than 5 mm (extreme formation of dust during grinding), the brush rim has to be replaced completely. Therefore, remove the three fixing screws of the firm part of the dust guard and the two fixing screws of the detachable part. Pull out the worn brush rim and replace it by a new one. Pay attention that the fastening holes in the brush rim and the holes of the dust hood have the same position. Screw both parts together.

Instruction for use

Switch the machine on and put it carefully on the surface you want to work on. Hold the tool with both hands and work with circular or linear movements.

For best working results: don't put too much pressure on the surface you want to work on.

For grinding works right into edges of the wall, one segment of the dust guard can be removed.

This allows grinding on surfaces which are usually hard to reach.

Attention! All other grinding works have to be done with the complete dust guard.



Care and maintenance

Repairs may be executed only by appropriately qualified and experienced personnel. After every repair the machine has to be inspected by an electric specialist. Due to its design, the power tool needs a minimum of care and maintenance.

The following works have to be carried out or rather the component parts have to be inspected:

- The power tool as well as the ventilation slots always have to be clean.
- During work, please pay attention that no foreign elements get into the interior of the machine.
- In case of failure, a repair has to be carried out by an authorized service workshop.

Environmental Protection:

Raw material recycling instead of waste disposal. To avoid damages in transit, the tool is supplied in a sturdy blow mould case. The packaging as well as the tool and its accessories are made of recyclable materials which enable environmentally friendly and sort wise disposal by the local reception points.

Only for EU countries:

Do not dispose of electric tools together with household waste material!! In observance of European Directive 2002/96/EC on waste electrical and electronic equipment and its implementation in accordance with national law, electric tools that have reached the end of their life must be collected separately and returned to an environmentally compatible recycling facility.

Noise Emission:

The indication of noise emission is measured after DIN 45 635, p art 21.

The level of acoustic pressure on work site could exceed 85dB (A); in this case ear protectors must be used.

The typical hand-arm vibration is below 2.5 m/s².

Measured values determined according to EN 50 144.



Headquarter

Blastrac The Netherlands
 Utrechthaven 12
 NL – 3433 PN Nieuwegein
 Tel – 0031 30 601 88 66
 Fax – 0031 30 601 83 33
 Info@blastrac.nl

Blastrac Poland

Golina, Dworcowa 47a
 PL – 63-200 Jarocin
 Tel – 0048 627 40 41 50
 Fax – 0048 627 40 41 51
 Info@blastrac.pl

Blastrac Italy

S.S. 10 Padana Inferiore, 41
 IT – 29012 Caorso (PC)
 Tel – 0039 0523 81 42 41
 Fax – 0039 0523 81 42 45
 Info@blastra.it

Blastrac United Kingdom

Unit 2, Outgang Lane, Dinnington
 Sheffield, South Yorkshire
 GB – S25 3QY, England
 Tel – 0044 1909 56 91 18
 Fax – 0044 1909 56 75 70
 Info@blastrac.co.uk

Blastrac Germany

Richard Byrd Straße 15
 D – 50829 Köln (Ossendorf)
 Tel – 0049 221 70 90 32 0
 Fax – 0049 221 70 90 32 22
 Info@blastrac.de

Blastrac Spain

Calle Copernico, 16
 Nave 2
 E – 28820 Coslada
 Tel – 0034 91 660 10 65
 Fax – 0034 91 672 72 11
 Info@blastrac.com.es

Blastrac France (ZI)

29, Avenue des Temps Modernes
 F – 86360 Chasseneuil du Poitou
 Tel – 0033 549 00 49 20
 Fax – 0033 549 00 49 21
 Info@blastrac.fr

Blastrac Ukraine

Nezalezhnosti 14, of. 21
 UA – 07400 Brovary
 Tel – 0038 44 222 51 28
 Fax – 0038 44 277 98 29
 Info@blastrac.com.ua