



SPARE PARTS LIST
HTC 420 VS





Table of contents

HTC 420VS Chassis 2

HTC 420VS Handle 4

HTC 420VS Grinding head 6

HTC 420VS Grinding head inside 8

HTC 420VS Grinding holder cardan 10

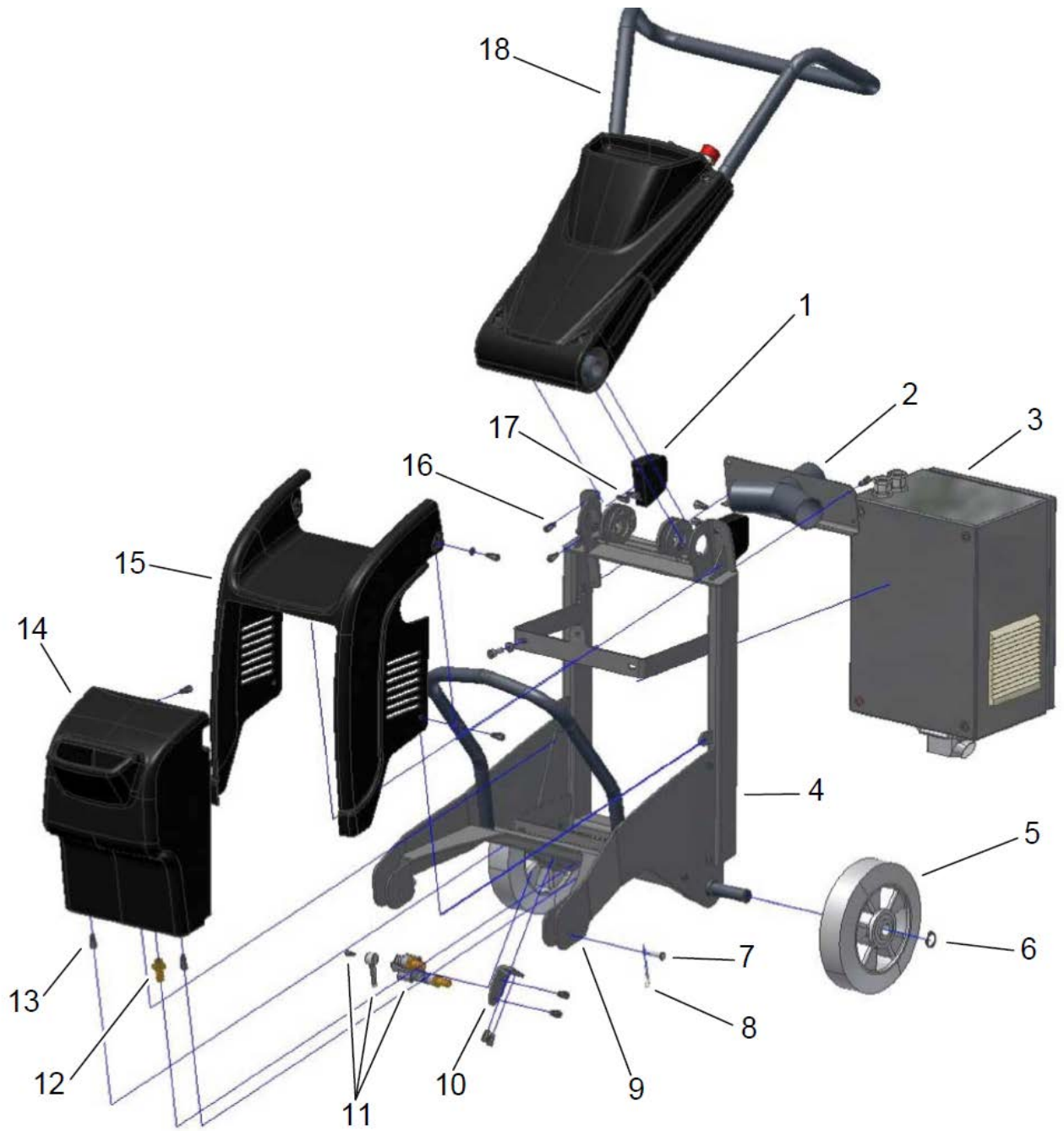
HTC 420VS Electrical 115V 60Hz (Coming soon) 12

HTC 420VS Electrical 230V 50Hz 14

HTC 420VS Electrical 230V 50Hz – EMC 16

HTC 420VS Electrical 3x400V (Coming soon) 18

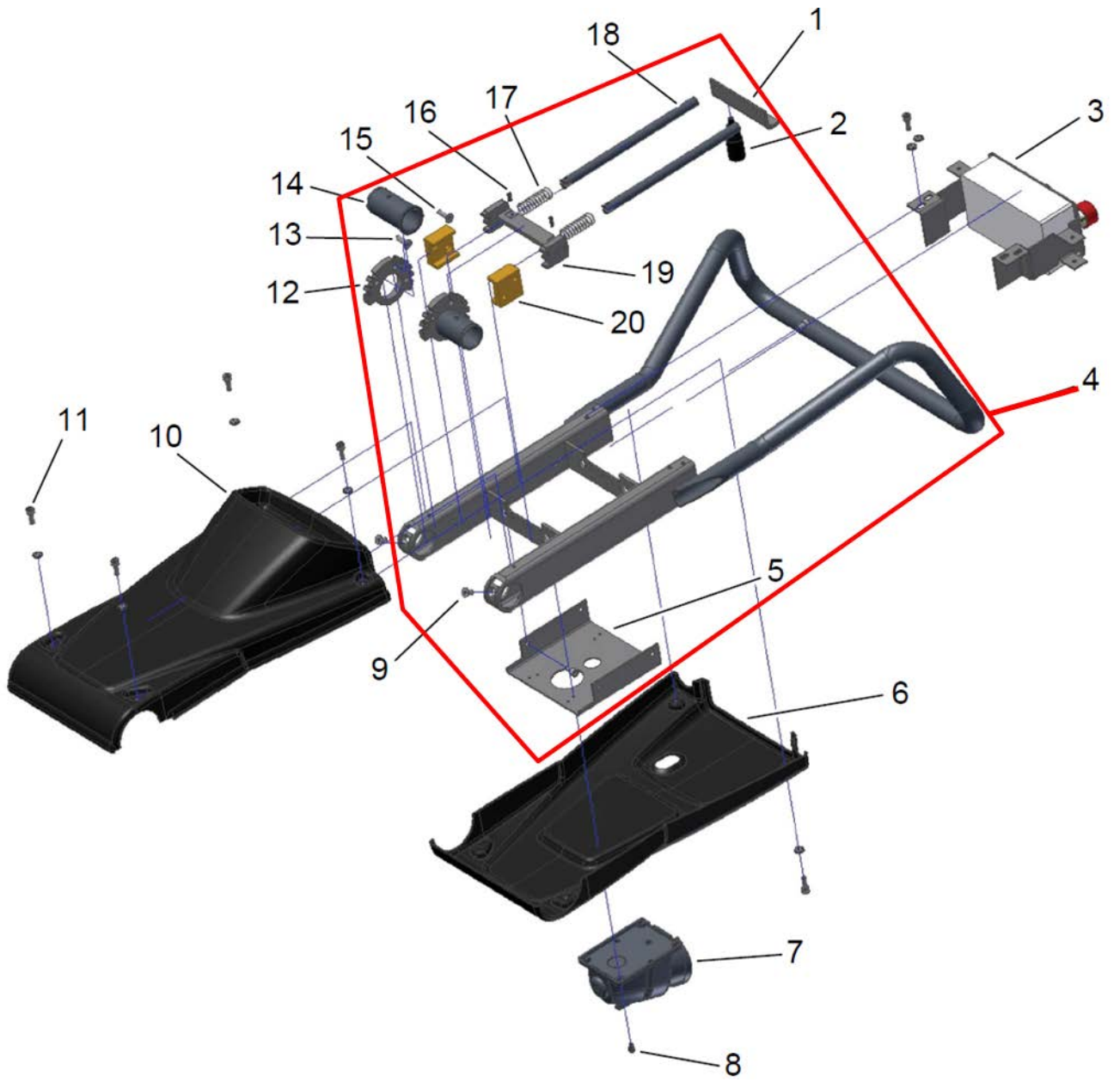
HTC 420VS Chassis



HTC 420VS Chassis

No.	Description	Part no	Qty
1	SUPPORT HEEL	593437101	2
2	ADAPTER TUBE	593458801	1
3	POWER UNIT 420 VS CE 3x400V	112345	1
3	POWER UNIT 420 VS US 1x115V	593439901	1
3	POWER UNIT 420 VS CE 1x230V	595724001	1
4	CHASSI CENTRAL MIDDLE	593436301	1
5	WHEEL	593408701	2
6	CIRCLIP SGA 20	593496301	2
7	CBH 8X35	593509801	2
8	LOCKING CLIP	593502501	2
9	CHASSI BOTTOM PART	112155	1
10	BRACKET WATER TAP	595603201	1
11	WATER TAP	593381001	1
12	TUBE CONNECT.2601-12-1/4	593391601	2
13	SCREW THERMOPL. PT WN 1452 TX	593502601	3
14	WATER TANK	593436001	1
15	COVER TOP	593435901	1
16	SCREW M6X10	593495401	20
17	SCREW M6X20	593496701	6
18	HANDLE SEE PAGE 5.		

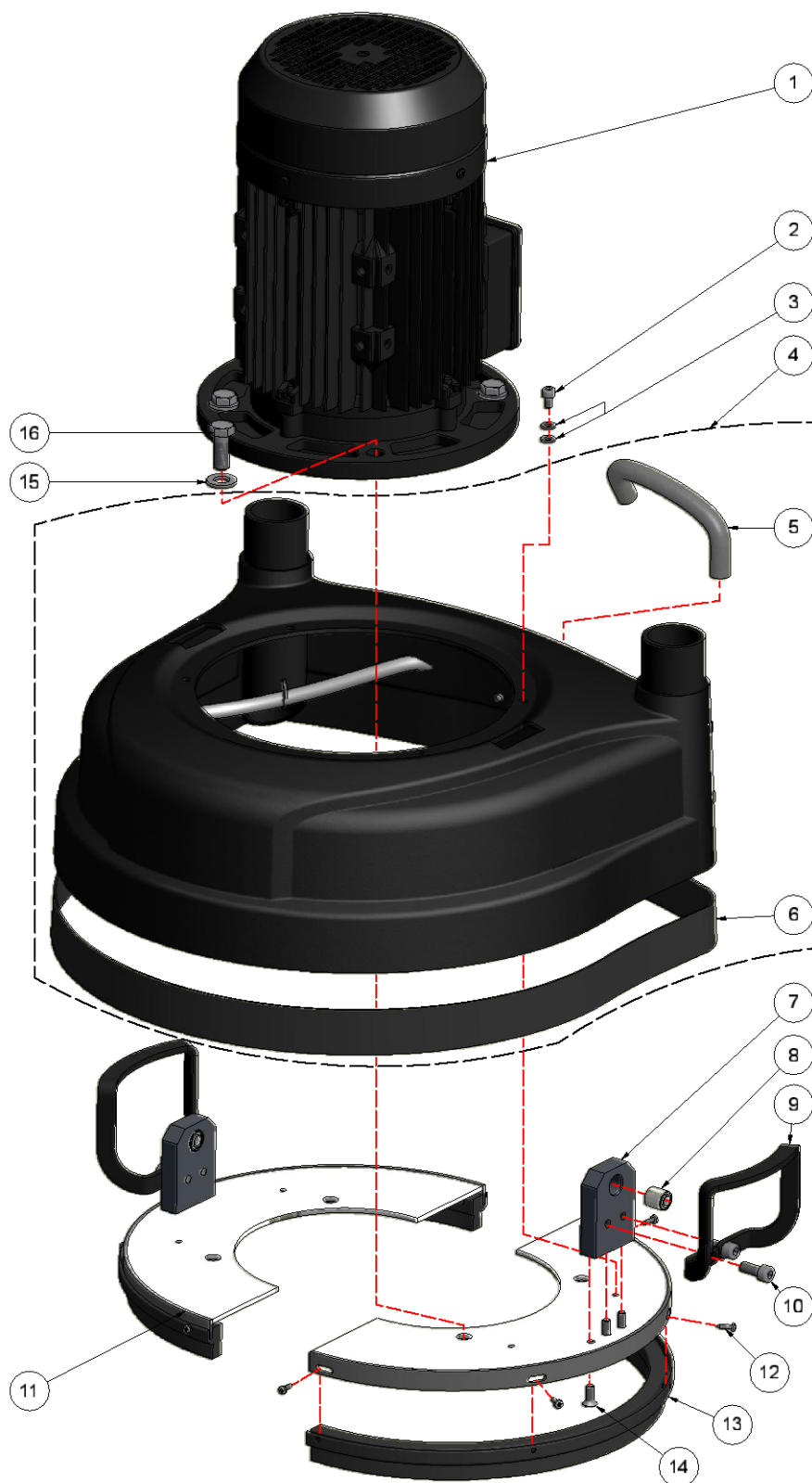
HTC 420VS Handle



HTC 420VS Handle

No.	Description	Part no	Qty
1	CONTROL PLATE	593436701	1
2	HANDLE KNOB	593436801	1
3	OPERATOR PANEL	595611301	1
4	HANDLE COMPLETE	593523301	1
5	CONNECTING PLATE	595603001	1
6	HANDLE COVER LOWER	593436101	1
7	POWER INLET, SURF16A 3P BLUE	593396601	1
8	SCREW M5X16	593505001	4
9	SCREW M6X9	593501201	4
10	HANDLE COVER UPPER	593436201	1
11	SCREW M6X16	593500701	4
12	GEAR LOWER	593436901	2
13	SCREW M6X25	593507301	6
14	HUB HANDLE	593437001	2
15	SCREW M6X9	593501201	4
16	SPRINGY PIPESTICK	593438001	2
17	PRESS SPRING	593437201	2
18	CONTROL AXLE	593436601	2
19	GEAR LOCKING	593436501	1
20	SUPPORT HANDLE MECHANISM	593436401	2

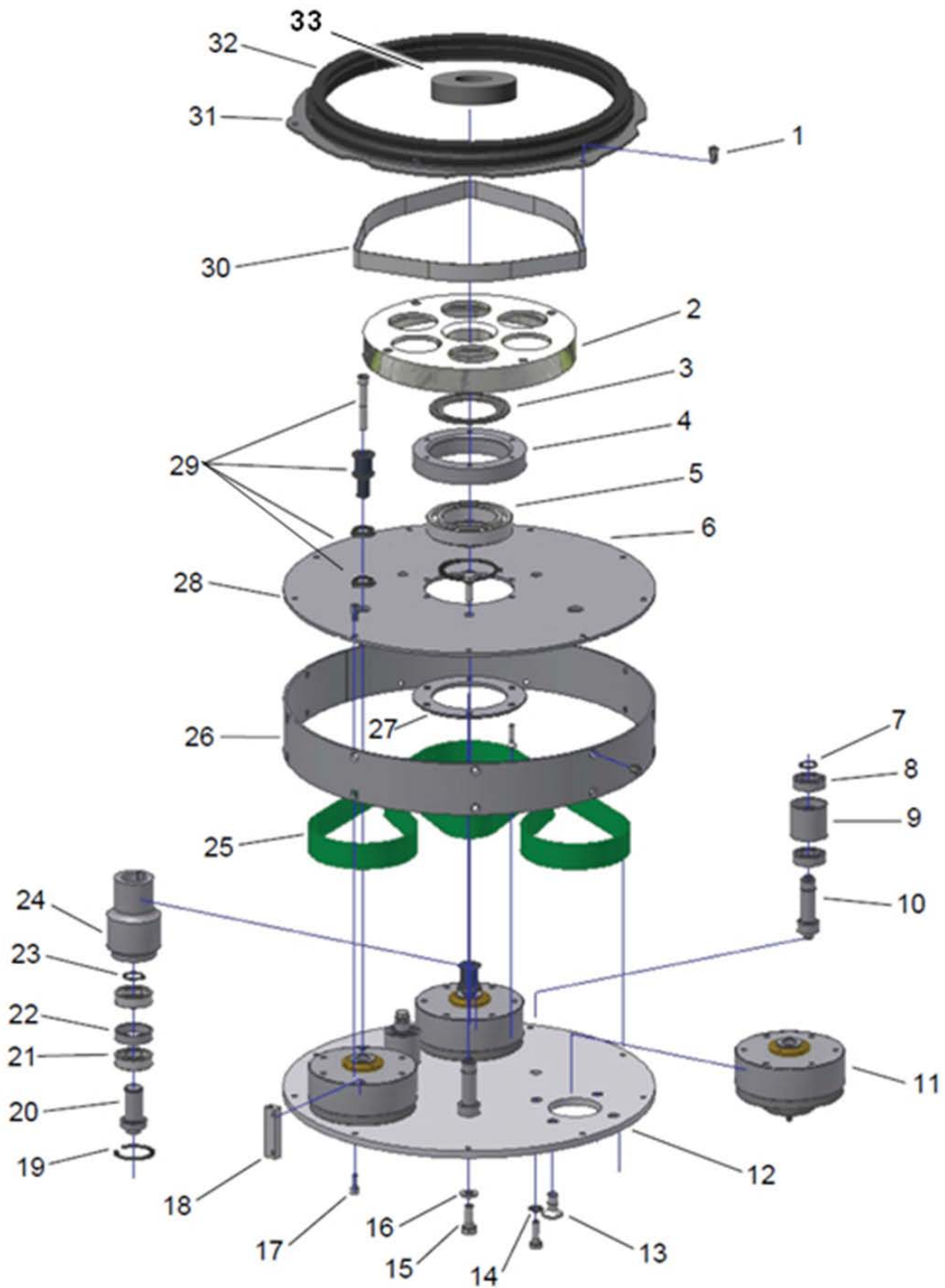
HTC 420VS Grinding head



HTC 420VS Grinding head

Item	Description	Part no	Qty
1	MOTOR 2.2KW	593405501	1
	WEDGE FOR ENGINE SHAFT	593424501	1
2	SCREW M6X10	593495401	4
3	WASHER M6	593496001	8
4	COVER COMPLETE	593449901	1
5	HOSE 15/10	593388601	0.3m
6	VELCRO CLOSING MALE	593615501	1.55m
	SPLASH GUARD	593405601	1
7	HINGE BRACKET	593402701	2
8	BUSHING	593377801	2
9	LIFTING HANDLE	593408601	2
10	SCREW M8X20	593502801	4
11	SAFETY COVER BELT V.2	593533101	2
12	SCREW 3.5X13	593508301	8
13	BRUSH STRIP	593443301	2X0.58
14	SCREW M6X16	593507801	6
15	WASHER M12	593499401	4
16	SCREW M12X35	593510901	4

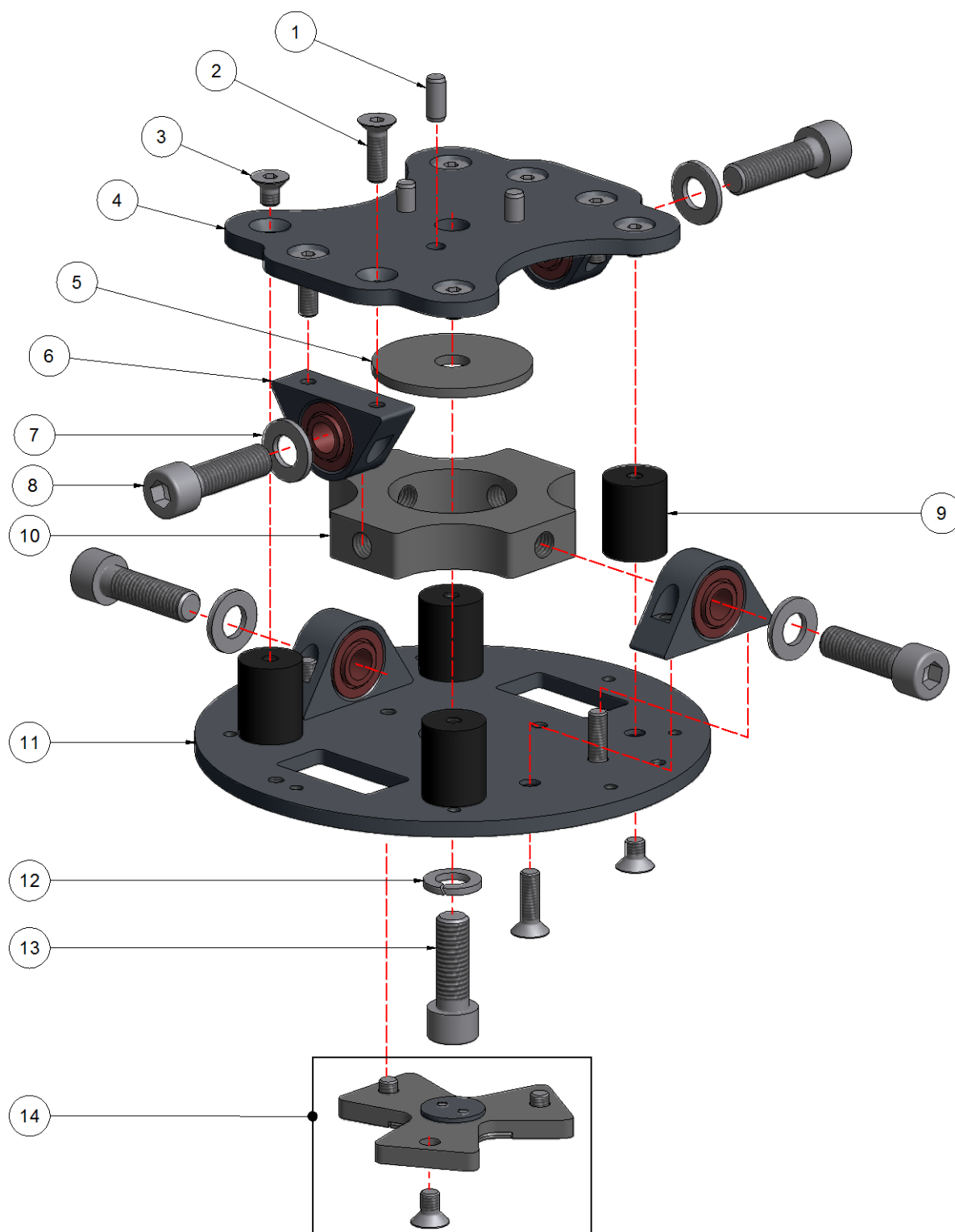
HTC 420VS Grinding head inside



HTC 420VS Grinding head inside

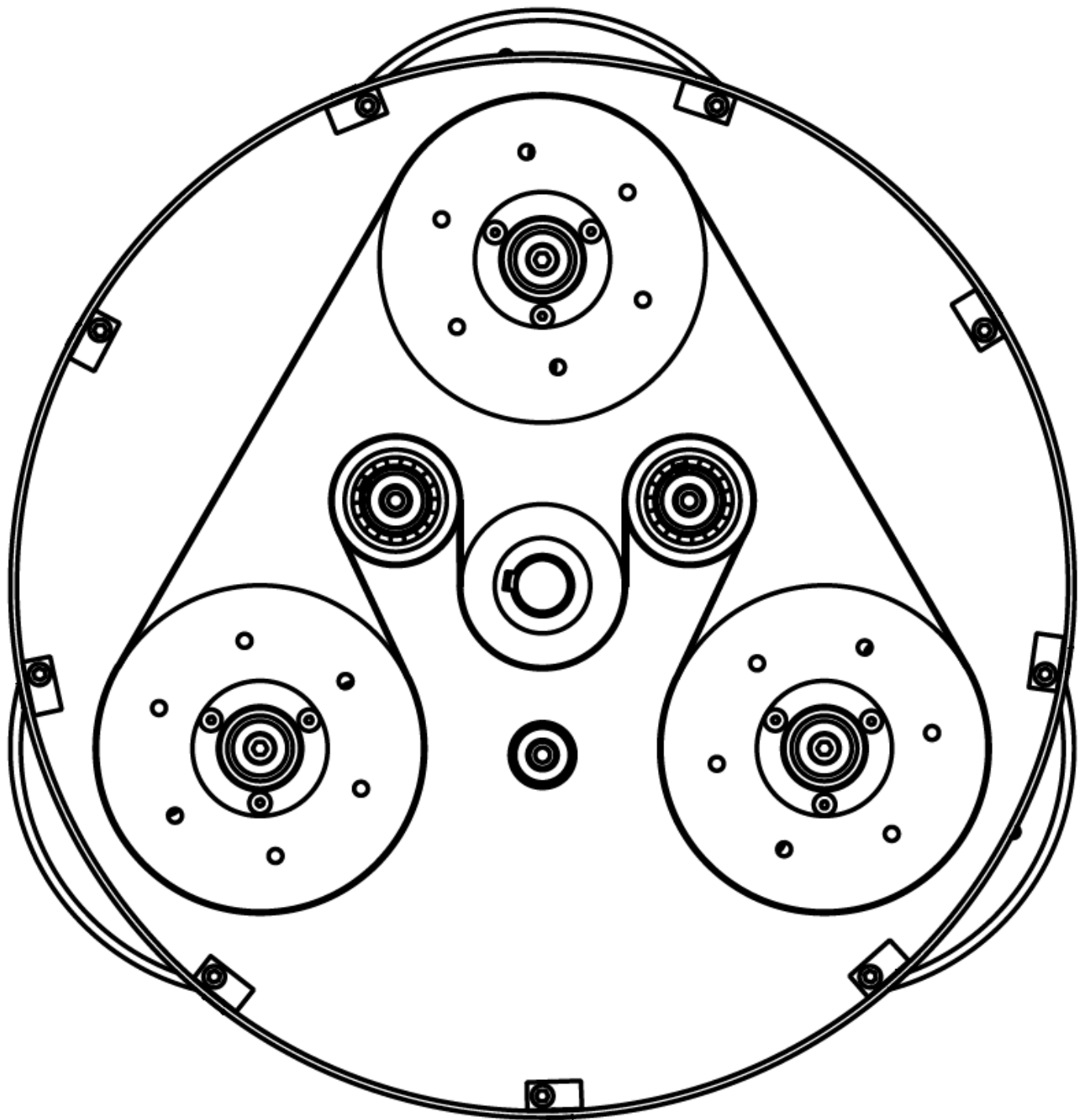
No.	Description	Part no	Qty
1	SCREW M6X20	593497101	3
2	MOTOR PLATE	593404101	1
3	NILOS RING 6012 JV	593377701	1
4	HOUSING CENTRE	593403401	1
5	BALL BEARING 6012	593382101	1
6	CIRCLIP SGA 60	593496501	1
7	CIRCLIP SGA 18	593501401	2
8	BALL BEARING 6003	593415101	4
9	PRESS WHEEL	593403901	2
10	SHAFT PRESSWHEEL	593403801	3
11	BELT WHEEL	593404501	3
12	LOWER LID	593401801	1
13	SCREW M12X20	593501801	12
14	WASHER M8	593496201	6
15	SCREW M10X25	593501101	1
16	WASHER M10	593498501	1
17	SCREW M6X16	593500701	12
18	FIXING BOSS	593402401	9
19	CIRCLIP SGH 42	593507401	1
20	SHAFT CENTERPULLEY	593403201	1
21	BALL BEARING 6004	593415201	2
22	SPACER CENTRE HUB	593403501	1
23	CIRCLIP SGA 20	593496301	1
24	CENTER PULLEY	593403301	1
25	BELT INNER	593377901	1
26	BORDER	593402201	1
27	COVER CENTER	593401901	1
28	UPPER LID	593402501	1
29	SCREW M8X55	593506001	3
	SHAFT UPPER BELT	593404001	3
	SEALING V-RING 18MM	593405001	3
	RADIAL SEAL	593464201	3
30	BELT UPPER	593378001	1
	SAFETY COVER COMPLETE	DISCONTINUED	1
31	SAFETY COV. WITHOUT BRUSHSTRIP	DISCONTINUED	1
32	BRUSH STRIP. SAFETY COVER	DISCONTINUED	1
33	FOAM RING	593408401	1

HTC 420VS Grinding holder cardan



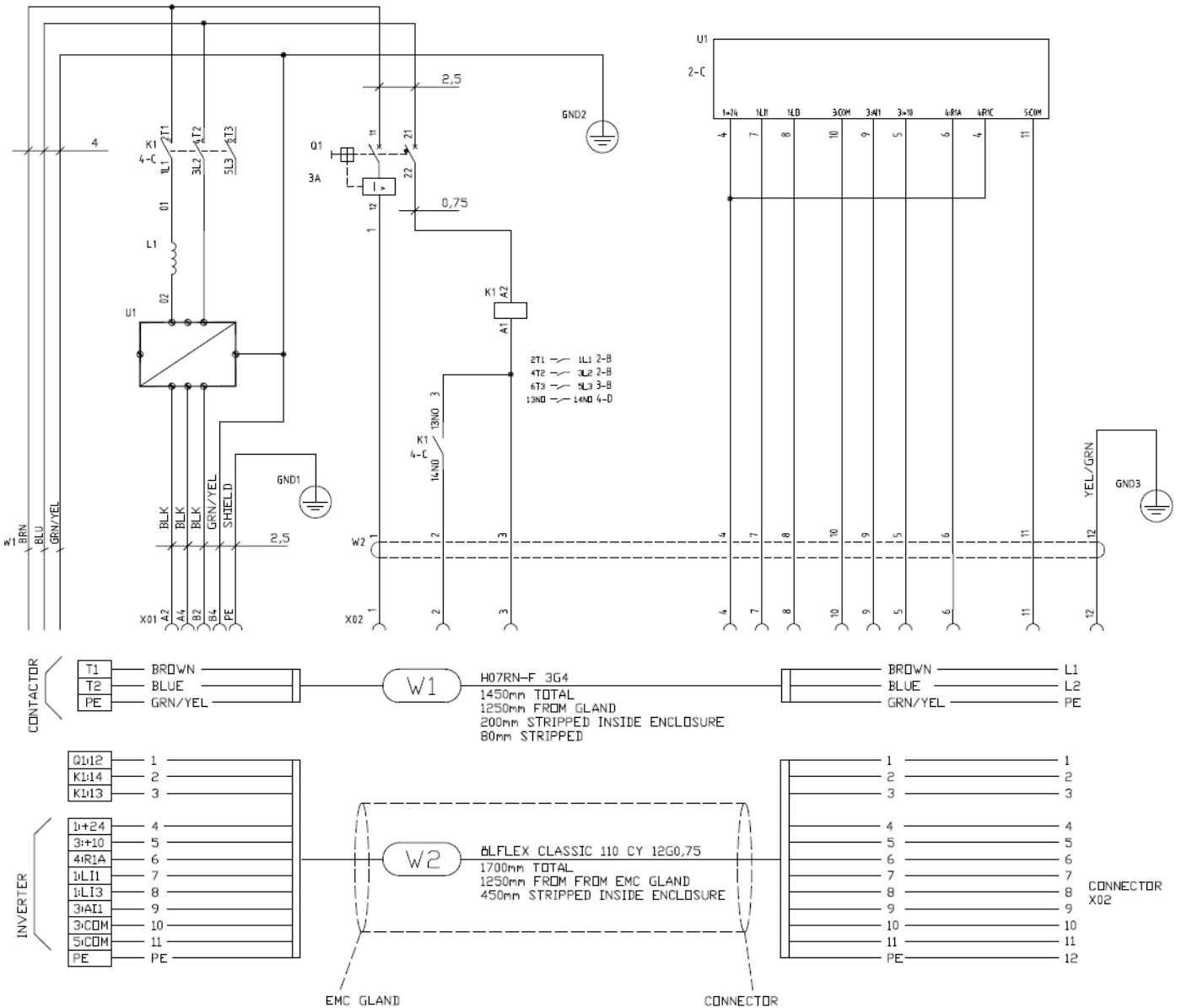
HTC 420VS Grinding holder cardan
GRINDHOLDER COMPLETE – 112355

Item	Description	Part no	Qty
1	CYLINDER PIN CP 6X14	593508401	3
2	SCREW M6X20	593505101	8
3	SCREW M6X9	593501201	8
4	UPPER GRIND HOLDER PLATE	593440101	1
5	WASHER	593440001	1
6	EAR BUSHING CMPL.	593616401	4
7	WASHER M10	593499101	4
8	SCREW M10X35	593508101	4
9	SHOCK ABSORBER 20x25 M6	595748401	4
10	CARDAN CONNECTION	593440301	1
11	LOWER GRIND HOLDER PLATE	593440201	1
12	WASHER M10	593509901	1
13	SCREW M10X30	593504101	1
14	CROSS COMPLETE	593616301	1

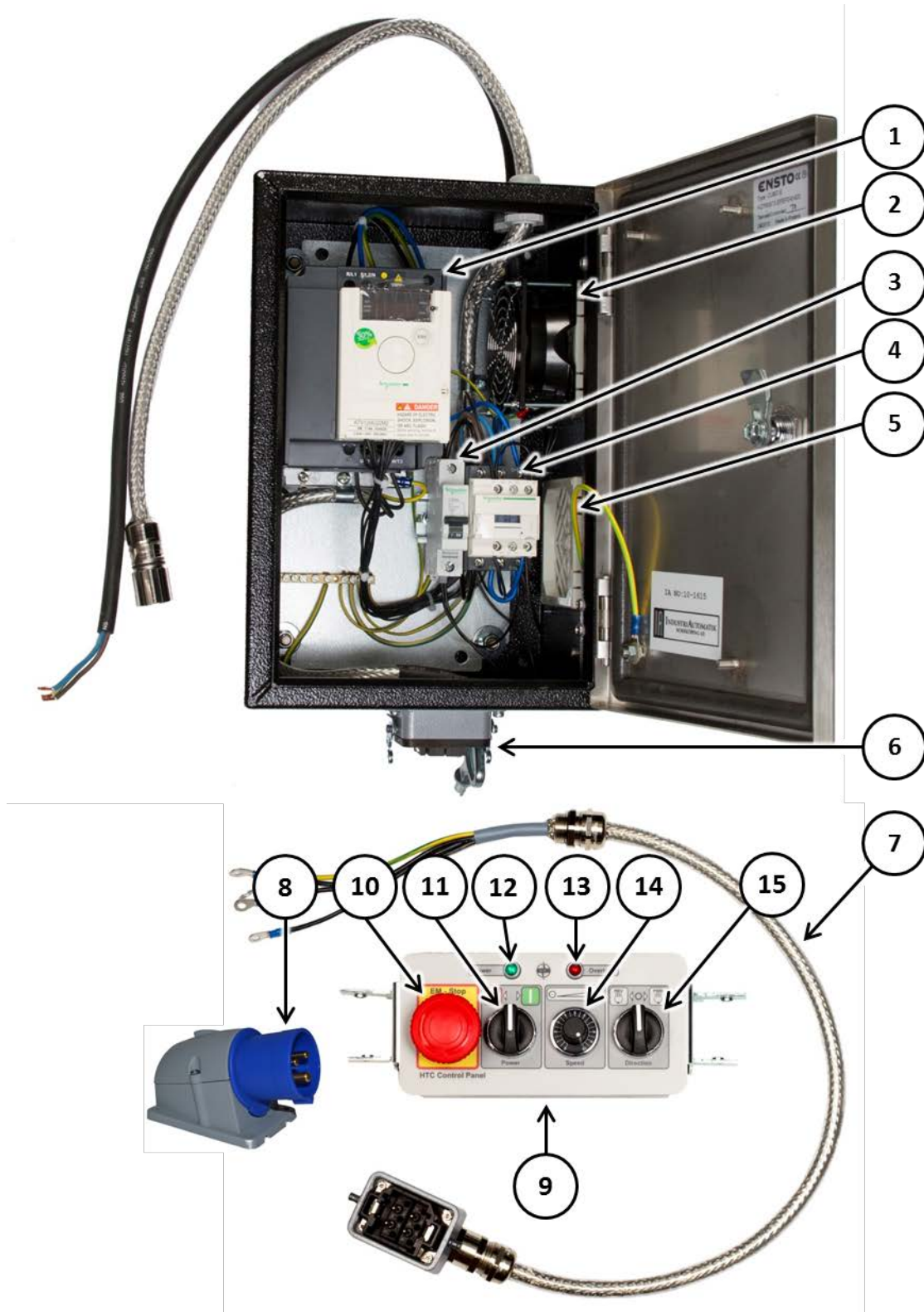


BELT ORIENTATION – HTC 420

MODIFIED PARAMETERS			
MENUE	SUB	PARAMETER	VALUE
drC		tFr	65
SEt		ACC	1.6
		dEC	1.6
		LSP	25
		HSP	65
		ItH	10.0
		FLG	100
		Ctd	9.5
drC		bFr	50
		nCr	8.3
		nSP	1420
		COS	0.82
I-O		r1	CtA
FUn	PSS	PS2	n_
FLt		rSF	LI3
drC		tun	YES

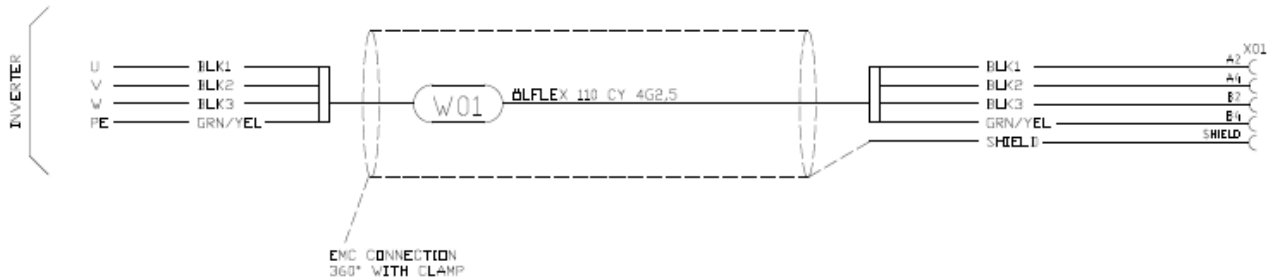
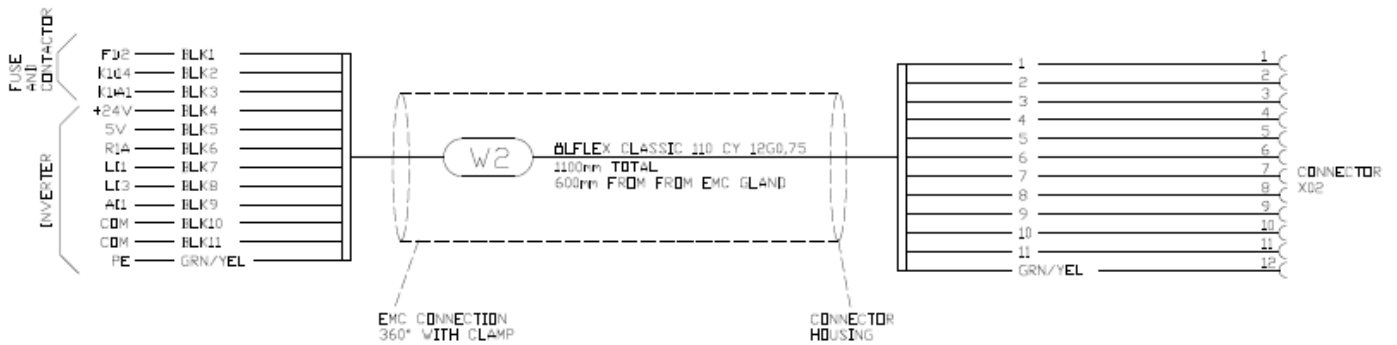
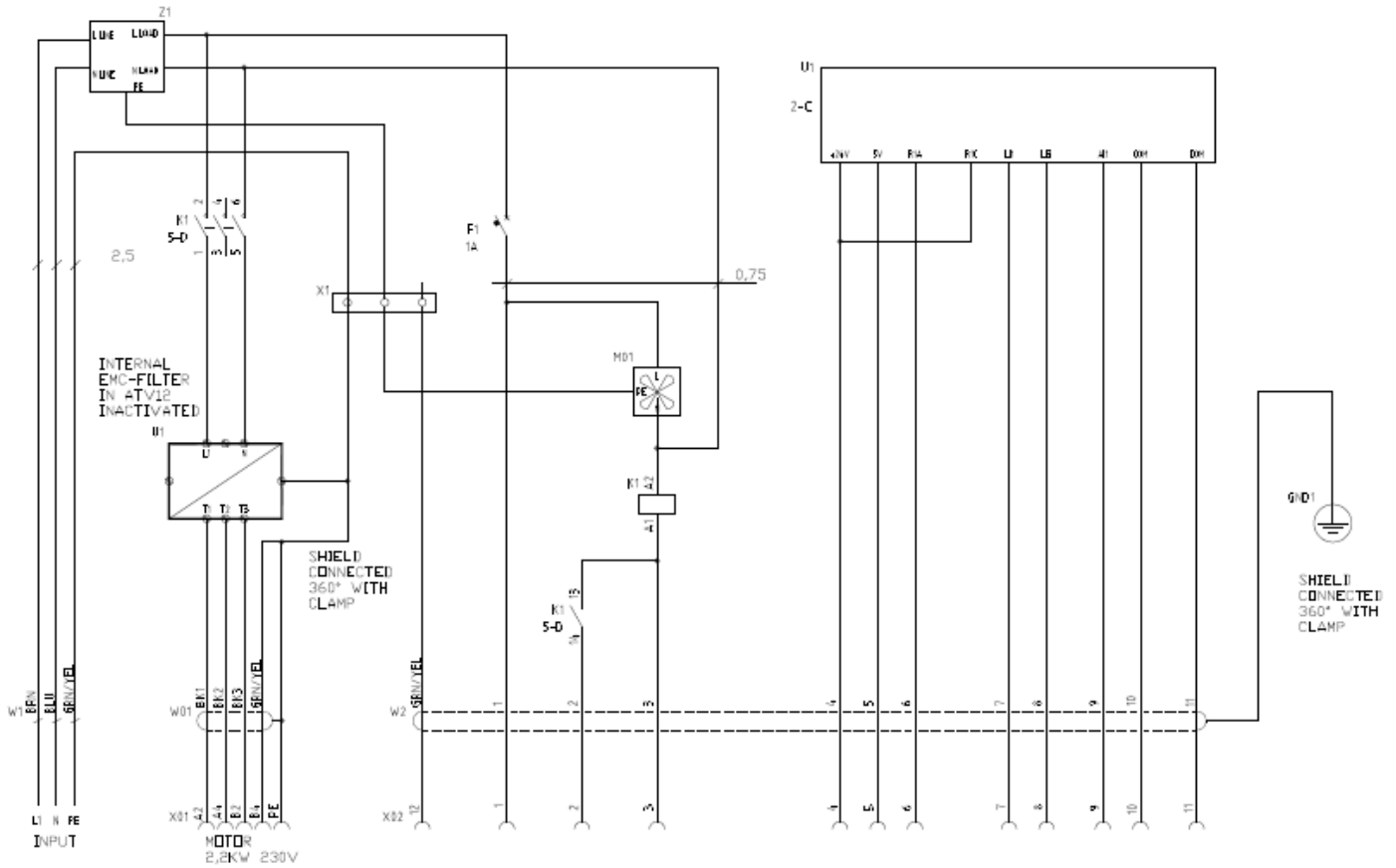


HTC 420VS Electrical 230V 50Hz

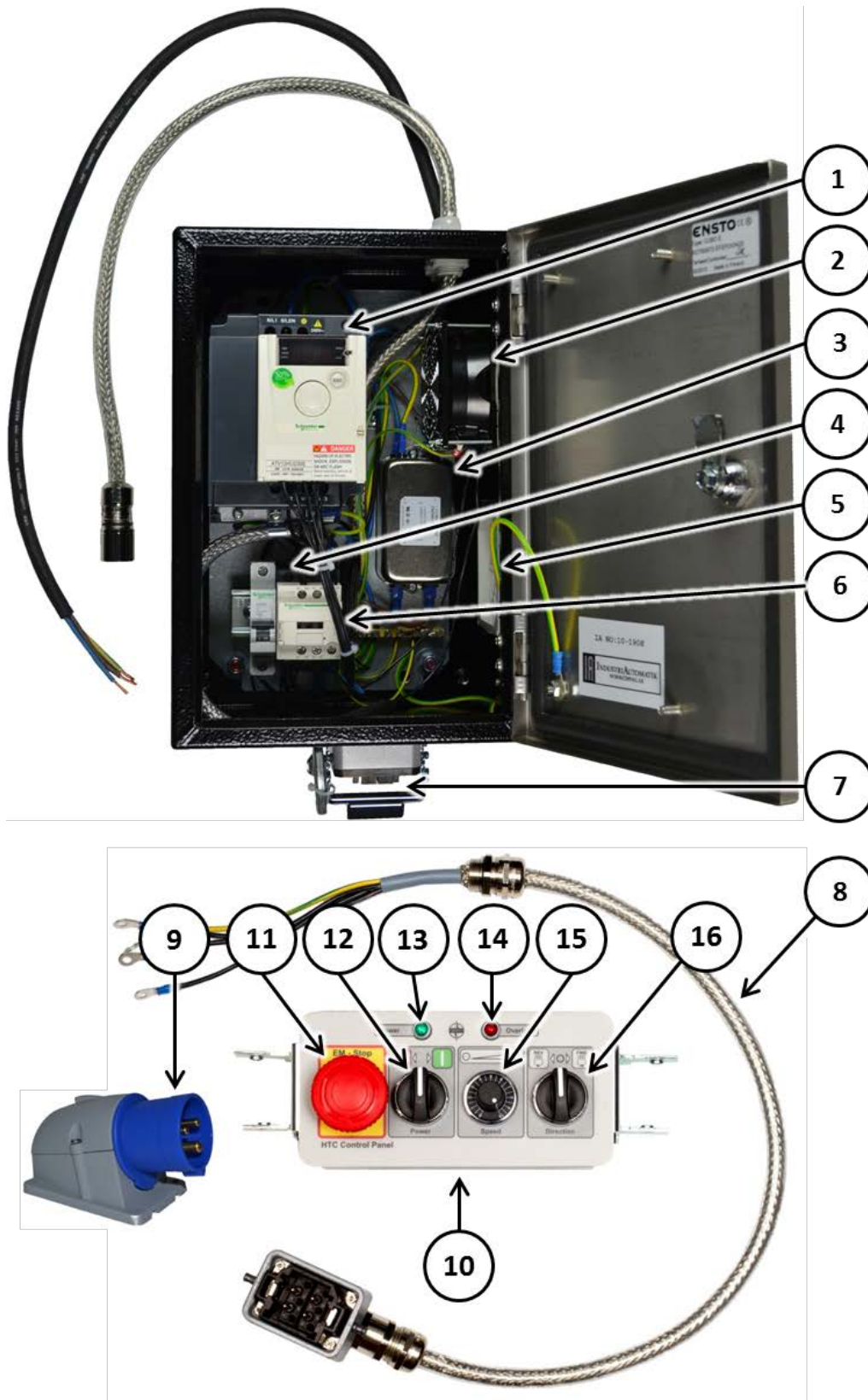


HTC 420VS Electrical 230V 50Hz

Item	Description	Part no	Qty
1	INVERTER	593460301	1
2	FILTER FAN	593466901	1
	FILTER HOLDER	593553001	1
3	FUSE 1POL 1A	595733001	1
4	CONTACTOR	593552401	1
5	FILTER HOLDER	593553001	1
6	MOTOR CABLE INLET	593552901	1
7	MOTOR CABLE	595324601	1
8	POWER INLET BLUE	593396601	1
9	OPERATOR PANEL	595724901	1
10	EMERGENCY STOP PRESS BUTTON	593406701	1
	MOUNTING BASE	593614901	1
	CONTACT BLOCK RED (NC)	593399701	1
11	ON/OFF KNOB 3-POS	593398201	1
	MOUNTING BASE	593614901	1
	CONTACT BLOCK RED (NC)	593399701	1
	CONTACT BLOCK GREEN (NO)	593399601	1
12	GREEN LED	593472301	1
13	RED LED	595642401	1
14	POTENTIOMETER KNOB	593420701	1
	POTENTIOMETER	593434101	1
15	RESET/FWD KNOB 3-POS	593472401	1
	MOUNTING BASE	593614901	1
	CONTACT BLOCK GREEN (NO)	593399601	2



HTC 420VS Electrical 230V 50Hz – EMC



HTC 420VS Electrical 230V 50Hz – EMC

Item	Description	Part no	Qty
1	INVERTER	593460301	1
2	FILTER FAN	593466901	1
	FILTER HOLDER	593553001	1
3	EMC-FILTER	593554301	1
4	FUSE 1POL 1A	595733001	1
5	FILTER HOLDER	593553001	1
6	CONTACTOR	593552401	1
7	MOTOR CABLE INLET	593552901	1
8	MOTOR CABLE	595324601	1
9	POWER INLET BLUE	593396601	1
10	OPERATOR PANEL	595724901	1
11	EMERGENCY STOP PRESS BUTTON	593406701	1
	MOUNTING BASE	593614901	1
	CONTACT BLOCK RED (NC)	593399701	1
12	ON/OFF KNOB 3-POS	593398201	1
	MOUNTING BASE	593614901	1
	CONTACT BLOCK RED (NC)	593399701	1
	CONTACT BLOCK GREEN (NO)	593399601	1
13	GREEN LED	593472301	1
14	RED LED	595642401	1
15	POTENTIOMETER KNOB	593420701	1
	POTENTIOMETER	593434101	1
16	RESET/FWD KNOB 3-POS	593472401	1
	MOUNTING BASE	593614901	1
	CONTACT BLOCK GREEN (NO)	593399601	2

